



# T8INNVROLLP

8' INNV ROLLED STYLE TABLE  
PORTABLE DESIGN

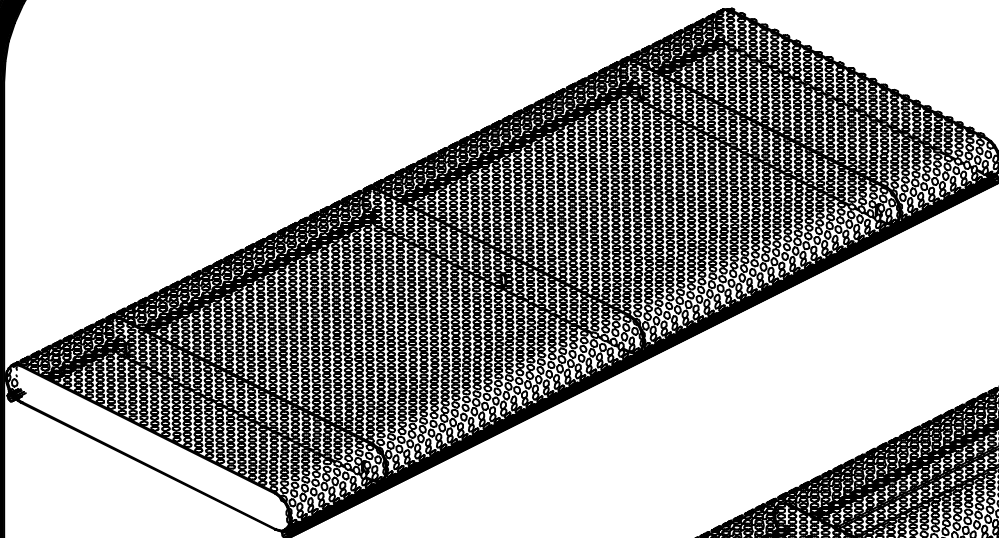
WEBCOAT PRODUCTS  
P.O. BOX 3160  
McALESTER, OKLAHOMA 74501  
1-800-505-5101  
FAX: (918)426-5924  
E-MAIL: WEBCOAT@WEBCOAT.COM

Please take the time to locate and identify each part. Assemble the units on a smooth flat surface. It is also helpful to lay the tops and seats on cardboard or a drop cloth to prevent scratching of the surface during assembly. All parts have been pre-cut and pre-drilled for ease of assembly. All holes are slotted to allow for easy assembly and for final levelling of tops and seats to frames. Fully assemble all parts without totally tightening nuts and bolts. After all assembled go back and retighten nuts to bolts. DO NOT OVER TIGHTEN NUTS TO BOLTS. Over tightened nuts can crack the plastisol coating. All the necessary quantities of parts required are listed in this assembly instructions.

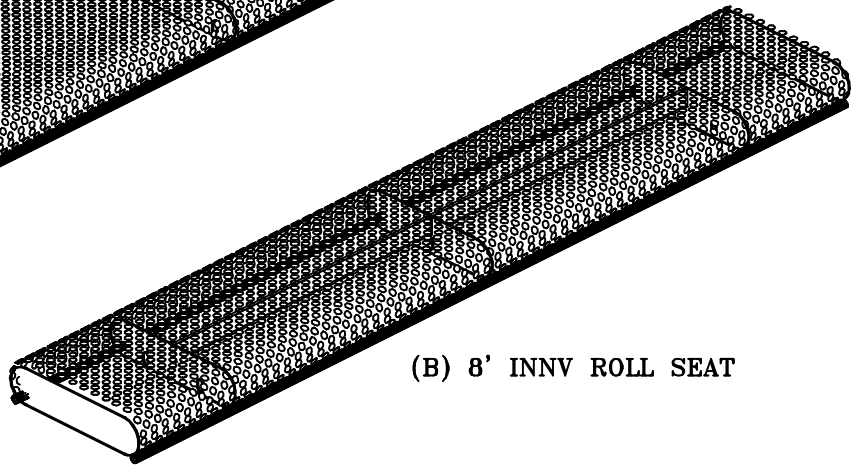
DO NOT BEGIN ASSEMBLY UNTIL YOU HAVE READ THESE INSTRUCTIONS AND ARE FAMILIAR WITH THE PARTS.



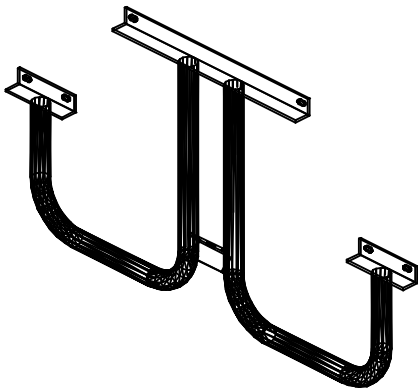
# PARTS IDENTIFICATION



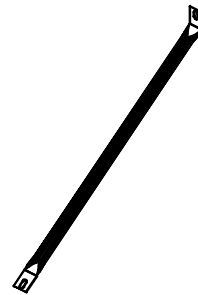
(A) 8' INNV ROLL TOP



(B) 8' INNV ROLL SEAT



(C) "H" FRAME



(D) DIAGONAL

## PARTS LIST

ITEM	PART#	DESCRIPTION	QTY.
A	TT8INNVROLL	8' INNVROLL TOP	1
B	S8INNVROLL	8' INNVROLL SEAT	2
C	FH	"H" FRAME	2
D	D8	DIAGONAL	2

ITEM	HARDWARE DESCRIPTION	QTY.
HW1	5/16" X 18 NYL LOCKNUTS	15
HW2	5/16" X 18GA CAP BOLTS	15
HW3	5/16" FLAT WASHERS	30
HW4	BOLT GUARDS	15

ASSEMBLY TOOLS REQUIRED  
2- 1/2" WRENCHES

## HARDWARE IDENTIFICATION



(HW1) 5/16" X 18  
NYL LOCKNUTS



(HW2) 5/16" X 18  
GAUGE CAP BOLTS



(HW3) 5/16"  
FLAT WASHERS



(HW4) BOLT  
GUARDS

# ASSEMBLY PROCEDURES

## STEP 1

LAY TOP FACE DOWN ON A SMOOTH FLAT SURFACE.

## STEP 2

MOUNT ONE SET OF H FRAMES TO EACH END OF TOP SQUARED TO THE TOP. TABS WELDED ON THE H FRAMES FOR DIAGONALS MUST BE FACING EACH OTHER AND THE ANGLE IRON ON THE H FRAMES MUST BE BOLTED TO THE OUTSIDE OF BRACES ON THE TOPS AND SEATS. FASTEN BY MEANS OF TWO 1 1/2" BOLTS, WASHERS AND LOCK NUTS. Hand tighten at this time.

## STEP 3

MOUNT THE SET OF DIAGONALS TO THE CENTER HOLE ON THE BRACE RUNNING LENGTHWISE OF THE TABLE TOP. MOUNT THE OTHER END OF THE DIAGONAL TO THE 1 1/2" x 1 1/2" ANGLE ON THE H FRAME.

The diagonals are fastened together by means of one 1 1/2 bolt, two washers and lock nut on either side of the tops cross brace. Start all three of the nuts on all the bolts on the center brace of top and both angles of the H frames, leaving loose until H frames are pulled out squared with the top then tighten.

## STEP 4

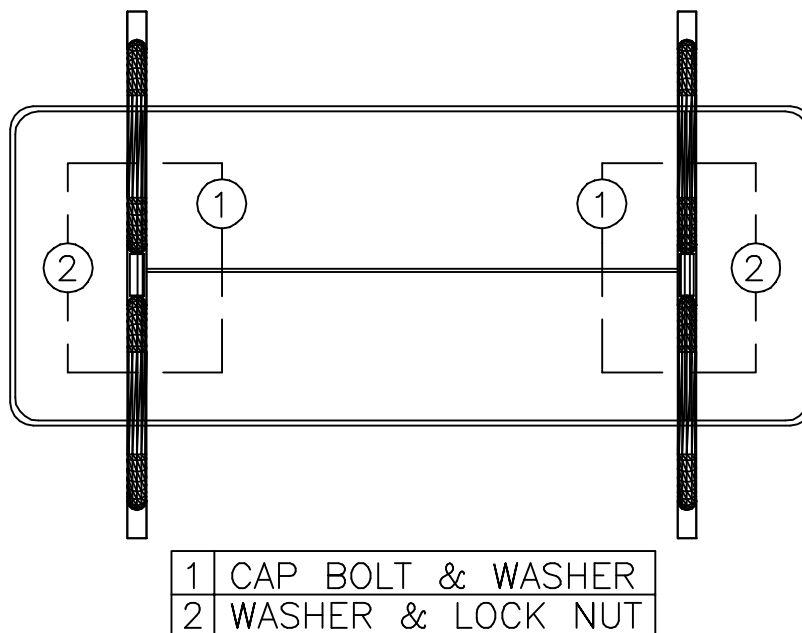
MOUNT THE TWO SEATS ON EACH SIDE OF THE TOP TO THE H FRAMES BY MEANS OF TWO 1 1/2" BOLTS, FOUR WASHERS, AND TWO LOCK NUTS ON THE OUTSIDE OF THE SEATS AND THE CENTER. Hand tighten only at this time.

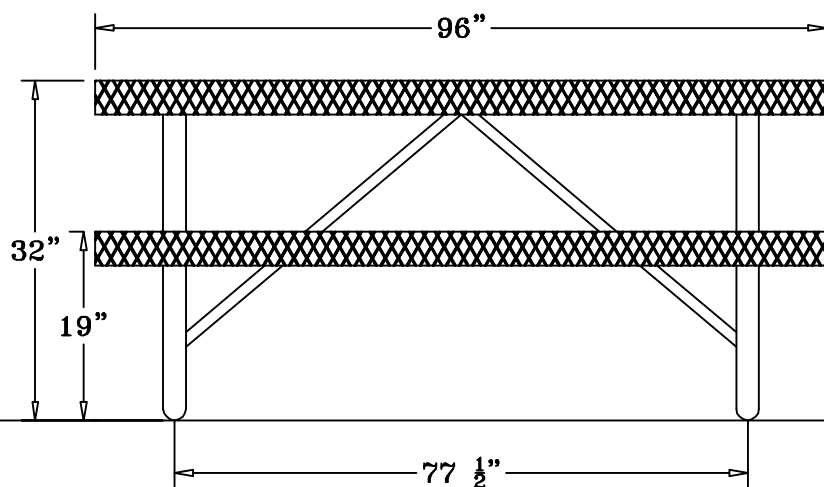
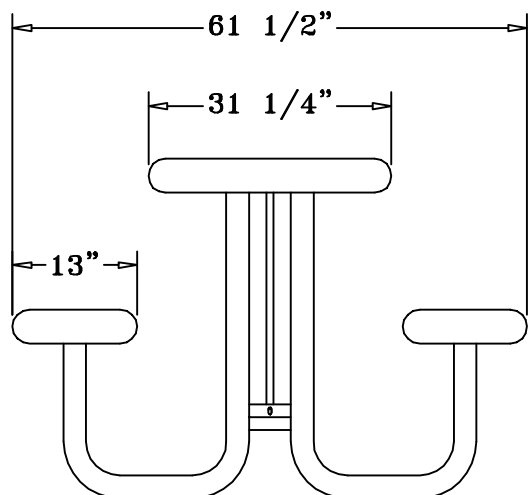
## STEP 5

NOW THAT ALL PARTS ARE ASSEMBLED SQUARE AND ALIGN ALL PARTS OF THE UNIT THEN TIGHTEN ALL NUTS ON BOLTS SECURELY. DO NOT OVER TIGHTEN AS THIS WILL CAUSE THE PLASTISOL COATING TO CRACK.

## STEP 6

CAREFULLY TURN TABLE RIGHT SIDE UP.





## SPECIFICATIONS

8' POLY VINYL ROLLED PUNCHED STEEL TABLE TOP WITH TWO ATTACHED 96" X 14" SEATS. ALL EDGES ARE ROLLED. FRAME IS PORTABLE DESIGN.

COATED WITH A 1/8" TO 1/4" THICK PLASTISOL ULTRAVIOLET STABILIZED VINYL COATING FUSED AND BAKED TO A 90% GLOSS.

TABLE HEIGHT IS 32" APPROXIMATELY. SEAT HEIGHT IS 19" APPROXIMATELY. TOTAL OVERALL DIMENSIONS ARE 96" X 61 1/2".

TOP AND SEATS ARE MADE FROM HEAVY DUTY 11 GAUGE PRECISION PUNCHED 1/2" HOLES STEEL BORDERED WITH 1/2" ROUNDS. ALL CENTER BRACES ARE MADE FROM 3" X 1/8" FLAT STEEL.

FRAMES ARE MADE OF 2 7/8" HEAVY GALVANIZED STEEL TUBING THAT IS GALVANIZED INSIDE AND OUT AND MEETS OR EXCEEDS THE YIELD AND TENSILE OF SCH 40 PIPE. CONSTRUCTED SO AS TO PROHIBIT RAIN WATER FROM COLLECTING AT GROUND LEVEL. COATED WITH A BAKED ON POLYESTER POWDER COAT FINISH.

CROSS DIAGONALS ARE MADE OF 1" GALV. STEEL TUBING.

ALL HARDWARE IS NON-CORROSIVE.  
WEIGHT FOR THE T8INNVROLLP IS 243 LBS.

## MAINTENANCE

To maintain luster it is recommended to wash, rinse, and dry the units after prolonged use. Check for loose bolts and nuts and tighten as needed. Contact the factory for genuine Webcoat part replacements if needed.